

GRUNDIG

Ionic Hair Dryer

User Manual



HD 8080

EN



01M-8910143600-2621-01

Please read this manual first!

Dear Customer,

Thank you for purchasing a Grundig product. We hope that you get the best results from your product which has been manufactured with high quality and state-of-the-art technology. Therefore, please read this entire user manual and all other accompanying documents carefully before using the product and keep it as a reference for future use. If you handover the product to someone else, give the user manual as well. Follow all warnings and information in the user manual.

Meanings of the symbols

Following symbols are used in various sections of this manual:



Important information and useful hints about usage.



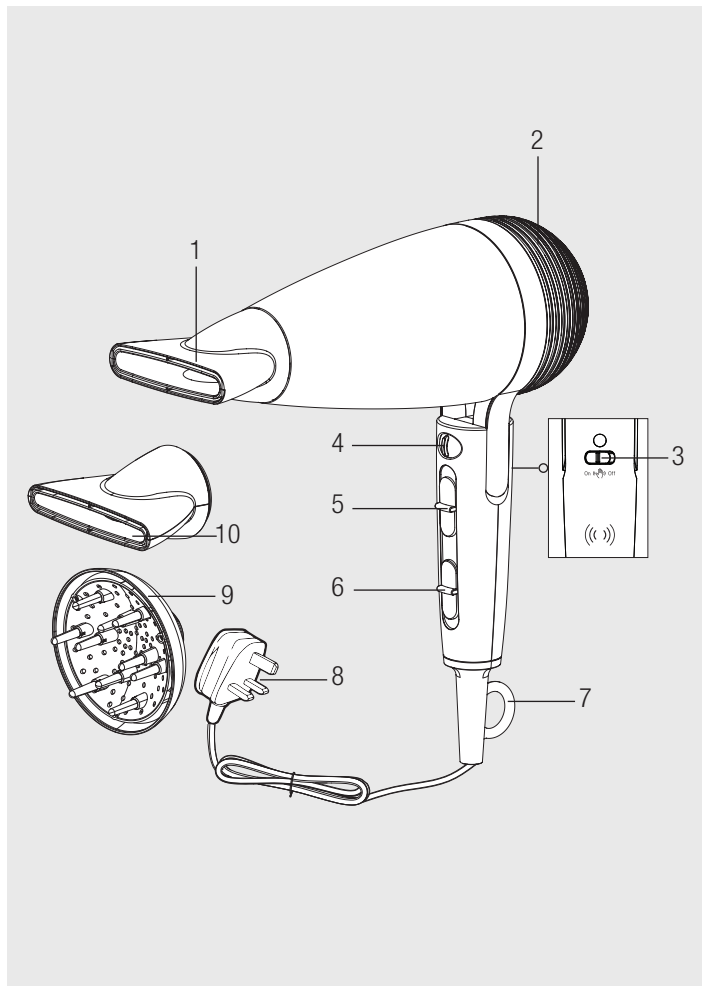
WARNING :
Warnings against dangerous situations concerning the security of life and property.

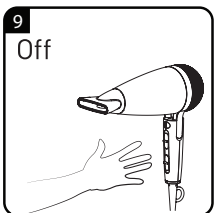
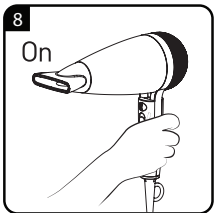
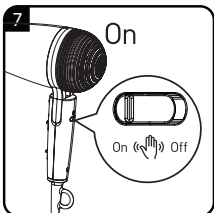
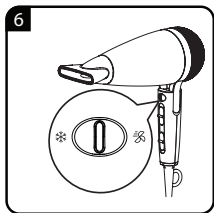
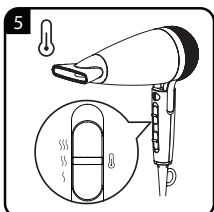
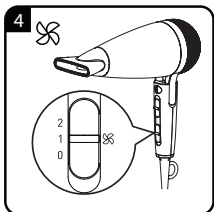
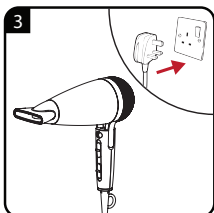
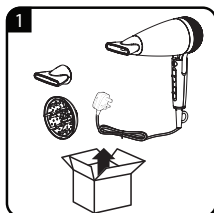


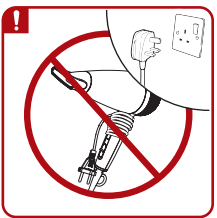
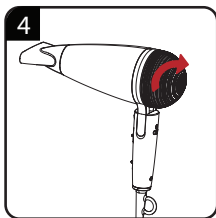
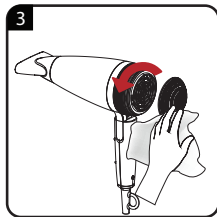
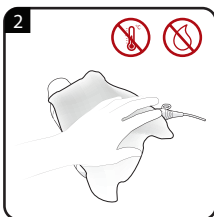
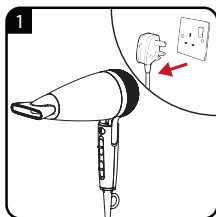
Electrical insulation class.



This product has been produced in environmentally-friendly, state-of-the-art facilities.







EN	OPERATION	CLEANING AND CARE

1 Important safety and environmental instructions

Please read this instruction manual thoroughly prior to using this appliance! Follow all safety instructions in order to avoid damage due to improper use!

This appliance is intended for domestic use only.

1.1 Safety warnings

- Keep the instruction manual for future use. Should a third party be given the appliance, please ensure the instruction manual is included.
- Never use the appliance in the bath, shower or over a wash basin filled with water; nor should it be operated with wet hands.



- Do not immerse the appliance in water or let it come into contact with water, even during cleaning.

1 Important safety and environmental instructions

- Warning: Do not use this appliance near bathtubs, showers, basins or other vessels containing water.
- Before cleaning or user maintenance operation first unplug the hairdryer from the wall socket.
- If the appliance is used in the bathroom, it is essential that the power plug is pulled out after use, as water close to the appliance can still constitute a danger, even if the appliance is switched off.
- If not already in use, installing a residual current-operated protective device (RCD) is recommended for additional protection with a rated residual operating current not exceeding 30 mA in the electrical circuit of your bathroom. Ask your electrician for advice.
- Never place the appliance on soft cushions or blankets during operation.

1 Important safety and environmental instructions

- Ensure that the air inlet and output openings are not covered during operation.
- The appliance is equipped with an overheating protection system.
- Unplug the appliance after use. Do not disconnect the plug by pulling on the cord.
- Never use the appliance if it or the power cord is visibly damaged.
- Never wind the power cord around the appliance, as this can result in damage. Check the power cord and the appliance regularly for visible damage.
- Our GRUNDIG Household Appliances meet applicable safety standards, thus if the appliance or power cord is damaged, it must be repaired or replaced by a service centre to avoid any dangers. Faulty or unqualified repair work may cause danger and risks to the user.

1 Important safety and environmental instructions

- Always keep the appliance out of the reach of children.
- This appliance can be used by children aged from 8 years and above and persons with reduced physical, sensory or mental capabilities or lack of experience and knowledge if they have been given supervision or instruction concerning use of the appliance in a safe way and understand the hazards involved. Children shall not play with the appliance. Cleaning and user maintenance shall not be made by children without supervision.
- Do not dismantle the appliance under any circumstances. No warranty claims are accepted for damage caused by incorrect handling.

1 Important safety and environmental instructions

- A warm flow of air is required to achieve a perfect result. Please note that a metallised brush can become extremely hot during prolonged or intensive use. To avoid injury, adjust the usage time of the appliance to the accessory being used.

1.2 Compliance with the WEEE Directive and Disposing of the Waste Product:

Compliance with the WEEE Directive and Disposing of the Waste Product:
This product complies with EU WEEE Directive (2012/19/EU) and UK WEEE Regulations (S.I.2013/3113 and its amendments). This product bears a classification symbol for waste electrical and electronic equipment (WEEE).



This symbol indicates that this product shall not be disposed with other household wastes at the end of its service life. Used device must be returned to official collection point for recycling of electrical and electronic devices. To find these collection systems please contact to your local authorities or retailer where the product was purchased. Each household performs important role in recovering and recycling of old appliance. Appropriate disposal of used appliance helps prevent potential negative consequences for the environment and human health.

1 Important safety and environmental instructions

1.3 Compliance with RoHS Directive

The product you have purchased complies with EU RoHS Directive (2011/65/EU) and UK RoHS Directive 2012. It does not contain harmful and prohibited materials specified in the Directive.

1.4 Package information



Packaging materials of the product are manufactured from recyclable materials in accordance with our National Environment Regulations. Do not dispose of the packaging materials together with the domestic or other wastes. Take them to the packaging material collection points designated by the local authorities.

1.5 Plug Wiring

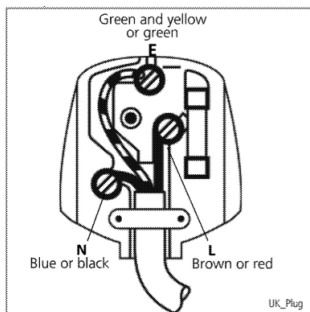
The moulded plug on this appliance incorporates a 13 A fuse. Should the fuse need to be replaced an ASTA approved BS1363 fuse of the same rating must be used. Do not forget to refit the fuse cover. In the event of losing the fuse cover, the plug must not to be used until a replacement fuse cover has been fitted.

Colour of the replacement fuse cover must be the same colour as that visible on the pin face of the plug. Fuse covers are available from any good electrical store.

1 Important safety and environmental instructions

1.5.1 Fiting a different plug

- As the colours of the wires in the mains lead of this appliance may not correspond with the coloured markings identifying the terminals on your plug, proceed as follows:
- Brown cable = L (Live)
- Blue cable = N (Neutral)
- Green/yellow cable must be connected to ground (E) \equiv line
- With the alternative plugs a 13 A fuse must be fitted either in the plug or adaptor or in the main fuse box. If in doubt contact a qualified electrician.



2 Overview

2.1 Controls and parts

See the figure on page 3.

1. Concentrator nozzle
2. Detachable air inlet grille
3. Smart on/off sensor activation button
4. Cool shot and turbo button
5. Temperature level
6. Speed level
7. Hanging loop
8. Plug

2.1.1 Accessories

9. Diffuser
10. Slim concentrator nozzle

2.2 Technical data

Power supply: 220–240 V~, 50-60Hz

Power: 1950-2300 W

Electrical insulation class: II

Technical and design modifications reserved.

3 Operation



Check if the mains voltage on the type plate on the handle of the appliance corresponds to your local mains supply.



The Cool Shot interrupts the hot air with a flow of cold air. This allows you to fix your hairstyle better and more lastingly.



CAUTION! Never wind the power cord around the appliance, as this can result in damage. Check the power cord and the appliance regularly for visible damage.

3.1 Settings

Your appliance has the following settings:

3.1.1 Smart on/off sensor activation button (3)

When the button is activated (on) the smart on/off sensor is enabled. When you touch the handle part the device switches on automatically, when you leave the handle the device stops. This feature is optional. When the button is deactivated (off) the feature is canceled.

Cool shot and turbo button (4)

– ❄️ : Disconnects the hot air flow and lets cold air flow out

Turbo : It is used for higher performance.

⌘ Speed level (6)

- 0 : off
- 1 : low speed
- 2 : high speed

3 Operation

Temperature level (5)

- 1 : Low temperature
- 2 : Moderate temperature for gently drying and styling
- 3 : high temperature for fast drying

3.2 Diffuser (9)

The diffuser ensures more volume and lifts the hair at the roots.

4 Information

4.1 Cleaning and care

- Turn the appliance off and unplug the power cord from the wall socket.
- Before cleaning, allow the appliance to cool down. The appliance can become very hot.



Before using the appliance after cleaning, dry all parts carefully with a soft cloth or paper towel.

4.2 Storage

- If you do not plan to use the appliance for a long period of time, please store it carefully.
- Make sure that it is unplugged, has completely cooled down and is completely dry.
- Do not wrap the power cord around the appliance.
- Keep the appliance in a cool, dry place.
- Make sure that the appliance is kept out of the reach of children.



For commissioning, general use and cleaning, please observe the instructions on pages 4-5 of this operating manual.

24 months breakdown and repair guarantee

Guarantor: **Beko plc, 1 Greenhill Crescent, Watford, Hertfordshire. WD18 8UF**

The guarantee does not in any way diminish your statutory or legal rights.

Your appliance has the benefit of our manufacturer's guarantee which covers the product for 24 months from the date of original purchase.

This gives you reassurance that if within that time, your appliance is proven to be defective because of either workmanship or materials, we will at our discretion either repair or replace your appliance.

The appliance must be correctly installed, located and operated in accordance with the instructions contained in the user manual. The guarantor disclaims any liability for accidental or consequential damage.

The Guarantee is subject to the following conditions:

- Documentary proof of the original purchase date is provided.
- The appliance has been installed and operated correctly in accordance with our operating and maintenance instructions.
- The appliance is used only on the electricity supply shown on the rating plate.
- The appliance has only been used for normal domestic purposes.
- The appliance has not been altered, serviced, dismantled or otherwise interfered with by any person.
- The appliance is used in the United Kingdom or the Republic of Ireland.
- Any parts removed during repair work or any product that has been replaced becomes our property.
- The guarantee is not transferrable if the product is resold.

The Guarantee does not cover:

- Transit, installation or delivery damage.
- Accidental damage.
- Misuse or abuse.
- Replacement of any consumable item or accessories. These include but are not limited to: plugs, cables, light bulbs, knobs, filters and flaps.
- Repairs or replacements required as a result of unauthorised repairs or inexpert installation that fails to meet the requirements contained in the user guide or instruction book.
- Repairs to products used in commercial or non-residential household premises.

How to obtain after sales service, help or general advice

Please keep your purchase receipt or other proof of purchase in a safe place as you will need to show us this document if your product requires attention within the guarantee period.

Please also record your product details below, which will allow you to access our services more quickly and help us identify your product. The model number is printed on the front of the user guide and the serial and model number is shown on your products rating plate.

Model number	Serial number	Purchased from	Date of purchase

Please call our UK based Customer Service department if you need urgent help or advice from us:

United Kingdom and Northern Ireland: **0333 207 9920**
Republic of Ireland: **01 691 0203**
You can also contact us through our website: **www.grundig.co.uk**

GRUNDIG

Beko Grundig Deutschland GmbH
Thomas-Edison-Platz 3
63263 Neu-Isenburg

www.grundig.co.uk